

GROUND CARE REGISTER

ISSUE 17

GET YOUR
MOWER
READY
FOR THE
SEASON.



MINIMISE YOUR DOWNTIME - BOOK NOW

Carrington 01205 480460 | Market Rasen 01673 842222 | Sutterton 01205 460600



Benefit from Kubota
technicians' expertise



Optimize your
machine productivity



Rely on your
machine at all times



Preserve the value
of your machine



Gain peace of
mind

STEWART

SPEARHEAD

Wiedenmann

Kubota

Irelands
GROUP

FARM MACHINERY & GROUND CARE SALES | HIRE | SERVICE | PARTS

☎ 01205 480460 | 🌐 irelandsgroup.co.uk

f FARM MACHINERY LINCOLNSHIRE 📷 IRELANDS FARM MACHINERY ✂ IRELANDS FARM MAC 📺 IRELANDS GROUP 3360

LOOKING AHEAD TO 2025

Welcome to Issue 17 of the Groundcare Register. As we head into Spring, we are looking forward to the chance to connect with our customers, suppliers, and the wider community.

Last month, we had the honour of hosting this year's **Kubota Expert Testing & Servicing Clinic** at our Sutterton depot, as part of the Kubota Insight Programme, which involved:

- ▶ Seeing the Kubota service experts at work
- ▶ Meeting the Kubota product experts and engineers
- ▶ Learning about the latest Kubota products and service offerings

A big thank you to everyone who attended and to Naoki and Mariko from Kubota, who travelled all the way from Japan to lead the discussion.

In May we'll be heading to the **Lincolnshire YFC Rally** and the **Woodhall Spa Show**. These events are always a highlight, and we're always happy to support local communities and to share more about ours, and our suppliers' products and services.

June will be another busy month, with the **Lincolnshire Show** on the horizon, and we're looking forward to seeing you there. Alongside this, we will again be hosting a **Groundcare Open Day** to showcase of our services to you, our customers and also our suppliers and their products. More details will follow!

As always, we are committed to supporting our customers and we hope to see you at these upcoming events. Keep an eye on our social media channels for more updates and announcements.



Holbeach Parish Council enhances grounds maintenance capacity with new Kubota B2-261

Holbeach Parish Council recently took delivery of a new Kubota B2-261 Compact Tractor and 60" rear discharge mowing deck. The new machine will run alongside their other Kubota tractor and mower, helping with the cutting and maintenance of the parks, play areas, cemetery and amenity areas. Here Pete & Dan from Holbeach Parish Council are pictured at our Sutterton depot with Paul Bell who handed over the machine.



FOR SALE



**2021 KUBOTA B2530
COMPACT TRACTOR**
Ref. 11011238



**GRASSHOPPER 100 ZERO
TURN MOWER** Ref. 11011239
Only 174 hours



**2015 KUBOTA R085
WHEELED LOADER**
Ref. 31011219



**2023 KUBOTA M5-112
TRACTOR & LOADER**
Ref. AG27634



**KUBOTA LX-401
COMPACT TRACTOR**
Ref. GC29250



**2018 KUBOTA L1361
COMPACT TRACTOR &
LOADER** Ref. GC31024



**KUBOTA EK1-261
COMPACT TRACTOR**
Ref. GC29055



**KUBOTA L2-622
COMPACT TRACTOR**
Ref. GC29248



**KUBOTA B1181 COMPACT
TRACTOR & LOADER**
Ref. GC18890



**KUBOTA LX-351
COMPACT TRACTOR**
Ref. GC29249



**KUBOTA L2-452
COMPACT TRACTOR**
Ref. GC29231

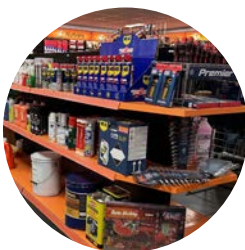


**KUBOTA BX261 26HP SUB
COMPACT TRACTOR**
Ref. GC28108



Have you visited our depots at
CARRINGTON
MARKET RASEN, and
SUTTERTON?

We're open from 8am - 5pm Monday to Friday and 8am - 12pm on Saturdays



WE STOCK A LARGE RANGE OF EQUIPMENT AND SPARES FROM
KUBOTA, SPEARHEAD, MAKITA, SEALEY, SPAREX, TOTAL & PORTEK

AS WELL AS CLOTHING FROM SWAZI, SEELAND, JACK PYKE, IBEX & OXFORD
LEATHERCRAFT, PLUS BOOTS FROM HARKILA, BUCKBOOTZ & GATEWAY 1,

We are also stockists for Calor Gas
- contact your local depot for availability.

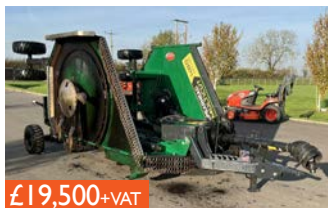
MAIN ROAD, CARRINGTON,
BOSTON, PE22 7HX - **01205 480460**

WOLDS INDUSTRIAL ESTATE, GALLAMORE LANE
MARKET RASEN, LN8 3HA - **01673 842222**

WIGTOFT ROAD, SUTTERTON,
BOSTON, PE22 7HX - **01205 480460**



FOR SALE



£19,500+VAT

**SPEARHEAD
MULTICUT 480 PROLINE**
(Ex Hire)



£8,950+VAT

**SPEARHEAD
MULTICUT 300**
Ref. AG29378



**SPEARHEAD
ROLLICUT 170**
Ref. GC13814



IMAGE COMING SOON

P.O.A.

**SPEARHEAD 600VFR
HEDGE CUTTER**
Ref. 31011172



£4,500+VAT

**TWOOSE TE 480
HEDGE CUTTER**
Ref. AG31188



**SPEARHEAD S32
COMPACT HEDGE CUTTER**
Ref. AG27386



**SPEARHEAD
SNIPER 190 MOWER**
Ref. GC13805



**SPEARHEAD
SNIPER 150 MOWER**
Ref. GC13819



£3,500+VAT

**KUBOTA SE1181 UB
FLAIL MOWER**
Ref. GC30297



**2016 BERTI TA/PS 200CM
(TEAGLE) MOWER**
Ref. AG25714



£2,250+VAT

**POTTINGER NOVA CAT 265
MOWER CONDITIONER**
Ref. AG28721



**TOMLIN TFM FLAIL
MOWER**
Ref. GC14393

AVAILABLE FOR LONG OR SHORT TERM HIRE

- JCB 4220 ICON FASTRACS
- JOHN DEERE & KUBOTA TRACTORS 120hp-250hp
- JCB TELESCOPIC LOADERS
- KUBOTA COMPACT TRACTORS 17HP-120HP
- ZERO TURN RIDE ON MOWERS
- RIDE ON MOWERS
- STEWART 14-20 TONNE GRAIN, ROOT & SILAGE & FLAT TRAILERS, PLUS CONTRACT TIPPERS
- AIR2G2 TURF MAINTENANCE
- GRASS MACHINERY (MULCHERS & FLAILS & ROTARY MOWERS)
- FLAIL COLLECTOR
- ROOT PRUNER
- DISC SEEDER
- AERATOR
- LAWN SCARIFIER
- SHREDDERS
- COMPACT ROTAVATORS
- COMPACT POWER HARROW
- SPREADERS
- COMPACT POST HOLE BORER
- COMPACT PLOUGH

**FOR GROUND CARE HIRE ENQUIRIES
PLEASE CONTACT HUW PRICE**

 **01205 480460 / 07917 496849**

 **huw@ifmgroup.co.uk**



FOR SALE



**KUBOTA RTV X1140
UTILITY VEHICLE**
Ref. AG18278



**KUBOTA RTV X1110
UTILITY VEHICLE**
Ref. AG28765



**40FT SHIPPING
CONTAINERS** Ref. GC31185
Call for full details and availability



**ELIET SUPER PROF CROSS
COUNTRY MAX TRACKED
SHREDDER** Ref. GC13906



**WIEDENMANN SUPER
500 FLAIL COLLECTOR**
Ref. GC13918



**2006 KUBOTA GR1600-II
RIDE ON MOWER**
Ref. GC29279



CAMPEY UNI-SCRATCH
Ref. GC19637
For maintenance of natural and
synthetic grass surfaces.



IMANTS ROOT PRUNER
Ref. GC20777
Prunes roots up to 100mm in
diameter with no clean up.



**20 INCH HYDRAULIC
DRIVEN FLAIL**
Ref. GC1731

THE KUBOTA GRO

Kubota mowers boast exceptional performance, reliability, and efficiency

Renowned for their durable construction, Kubota mowers are engineered to handle a variety of terrain and ease of use and boasts advanced features like ergonomic controls and fuel-efficient engines. When it comes to mowing, Kubota mowers deliver outstanding results while minimising maintenance and downtime. **Explore the range below, or contact us for more information.**

MOWERS



FC Series

Power: 22-50HP
Weight: 1000-2000kg
Cutting width: 44-61"
Collector capacity: 600/800/1300l



G Series

Power: 22-25HP
Weight: 815-995kg
Cutting width: 48-54"
Collector capacity: 560/640l



GR Series

Power: 13-21HP
Weight: 355-545kg
Cutting width: 42-48"
Collector capacity: 340/450l



UTILITY VEHICLES



RTV-X1110 RTV-X1140

Power: 24HP
Weight: 1000-1090kg
Body colours: Kubota Orange/
Realtree AP Camo



GROUND CARE RANGE

y, making them a top choice for both residential and commercial users.

ns and conditions, ensuring a consistently high-quality cut, and each model is designed for comfort
ether you're maintaining a large lawn or tackling extensive landscapes, Kubota mowers deliver
contact our our **Groundcare Sales Team** to find a solution to suit your needs.

F Series

Power: 25-38HP
Weight: 741-853kg
Cutting width: 60-72"



ZD1211

Power: 25HP
Weight: 790kg
Cutting width: 60"



G21E

Power: 21HP
Weight: 700-750kg
Cutting width: 48"
Collector capacity: 500l



Ze-481 Electric

Power: 9kW (12.2HP)
42/48" side-discharge cutting deck
Zero emissions
Low noise and vibrations



Z Series

Power: 19-24HP
Weight: 282-420kg
Cutting width: 42/48"



RTV-520

Power: 18HP
Weight: 625kg
Body colour: Kubota Orange





**BIGGER
STRONGER
TOUGHER**

The **EDGE Trailers** are Stewart's range of small dropside trailers, ideally suited for use in groundcare applications, offering the durability and functionality needed to handle the demands of landscaping, turf maintenance, and other tasks. Designed to withstand rough terrain and carry heavy loads, it ensures efficiency and reliability in various groundcare settings.



EDGE 4: 3000x1950x500mm

EDGE 8: 4000x2300x500mm

EDGE 12: 5000x2420x600mm

The trailers have a multi-function back door including spreader chain points and are built to withstand tough conditions, and are built with a Hardox body, which is tougher than mild steel. The EDGE trailers have an integral body prop so maintenance can be carried out safely, as well as back doors which hinge from the top or can be opened to the side thanks to a clever system of catches. Spreader chain points allow the door to be secured partially open for spreading loose material.

WHAT IS HARDOX®?

Hardox® is a wear plate; structures made of Hardox® weigh less and last longer than those made from mild steel. A tipper body made from Hardox® is more durable due to the unique combination of hardness and toughness. Using Hardox® allows for a body design with a minimum number of reinforcing beams on the outside.





Kubota

NEW!

Z4-541 RD



Operation and efficiency

The introduction of the Z4-541 broadens the existing zero-turn lineup, building upon a larger chassis while maintaining maneuverability comparable to smaller models.

The 360-degree turning capability enables effortless navigation around obstacles, while the machines' low centre of gravity and wide-profile drive wheels ensure exceptional stability and balance, making the machine suitable for tasks on uneven terrain.

The Z4-541's robust 54" steel fabricated deck comes as a 3-blade side discharge, with enhanced performance and cut quality, and featuring quick-dial height adjustment and K-lift deck operation for easy raising and lowering of the deck. Regardless of whether the machine is fitted with the side discharge or mulching kit, rest assured it will cover expansive areas, delivering a professional finish.

This specific model also features an optional OCDC (Operator Controlled Discharge Chute) kit, enabling operators to temporarily shut the side discharge, perfect for maintaining clean pathways and protecting parked vehicles from debris.

Performance

The Z4-541 is equipped with a petrol Kawasaki V FS730-V engine producing 24hp/17.9kw. The design of V twin engines allows the machine to run quieter and smoother with fewer vibrations than most traditional single-cylinder engines. A rear "wrap around" bumper gives added protection and comes as standard, along with a rear towing hitch, ideal for small light trailers.

Tailored for expansive areas, the versatility of this machine makes it well-suited for tackling large residential gardens or demanding commercial landscapes and green spaces – excelling in diverse settings and guaranteeing maximum efficiency with every operation.

CONTACTS

CARRINGTON (HEAD OFFICE)

01205 480460

MAIN ROAD, CARRINGTON, BOSTON, PE22 7HX



STUART GOSLING

Group Hire Manager

☎ 01205 480460 / 07824 317357



DARYL DUNN

Group Agricultural Sales Manager

☎ 01205 480460 / 07881 106298



HUW PRICE

Group Groundcare Manager

☎ 01205 480460 / 07917 496849



PAUL BELL

Groundcare Sales

☎ 01205 480460 / 07384 257960



COLIN CLARKE

Parts Manager

☎ 01205 480460 / 07387 022792



ADRIAN HALL

Groundcare Workshop

☎ 01205 480460 / 07799 901292



PIOTR IMIOLCZYK (PEPS)

Agricultural Workshop

☎ 01205 480460 / 07799 901323

MARKET RASEN - 01673 842222

WOLDS INDUSTRIAL ESTATE, GALLAMORE LANE,
MARKET RASEN, LN8 3HA



LAURA MALES

Depot & Parts Manager

☎ 01673 842222 / 07464 548834



BOB TINDALL

Groundcare Sales

☎ 01673 842222 / 07384 258479



TOM SHAW

Agricultural Sales

☎ 01673 842222 / 07502 336581



ANDY MATTHEWS

Service Technician

☎ 01673 842222 / 07469 852630

SUTTERTON - 01205 460600

WIGTOFT ROAD, SUTTERTON, PE20 2EL



PAUL LAWSON

Group Service Manager

☎ 01205 460600 / 07900 788580



HARRY COLEY

Parts Manager

☎ 01205 460600 / 07799 901301



JAMIE JENNINGS

Agricultural Sales Manager

☎ 01205 460600 / 07469 853763

Irelands Farm Machinery Ltd - New Building Project



The European Agricultural Fund for Rural Development : Europe Investing in Rural Areas

Development of old farm buildings into workshop, offices and stores

This project is part funded by The European Agricultural Fund for Rural Development



FARM MACHINERY & GROUND CARE SALES | HIRE | SERVICE | PARTS

☎ 01205 480460 | 🌐 irelandsgroup.co.uk