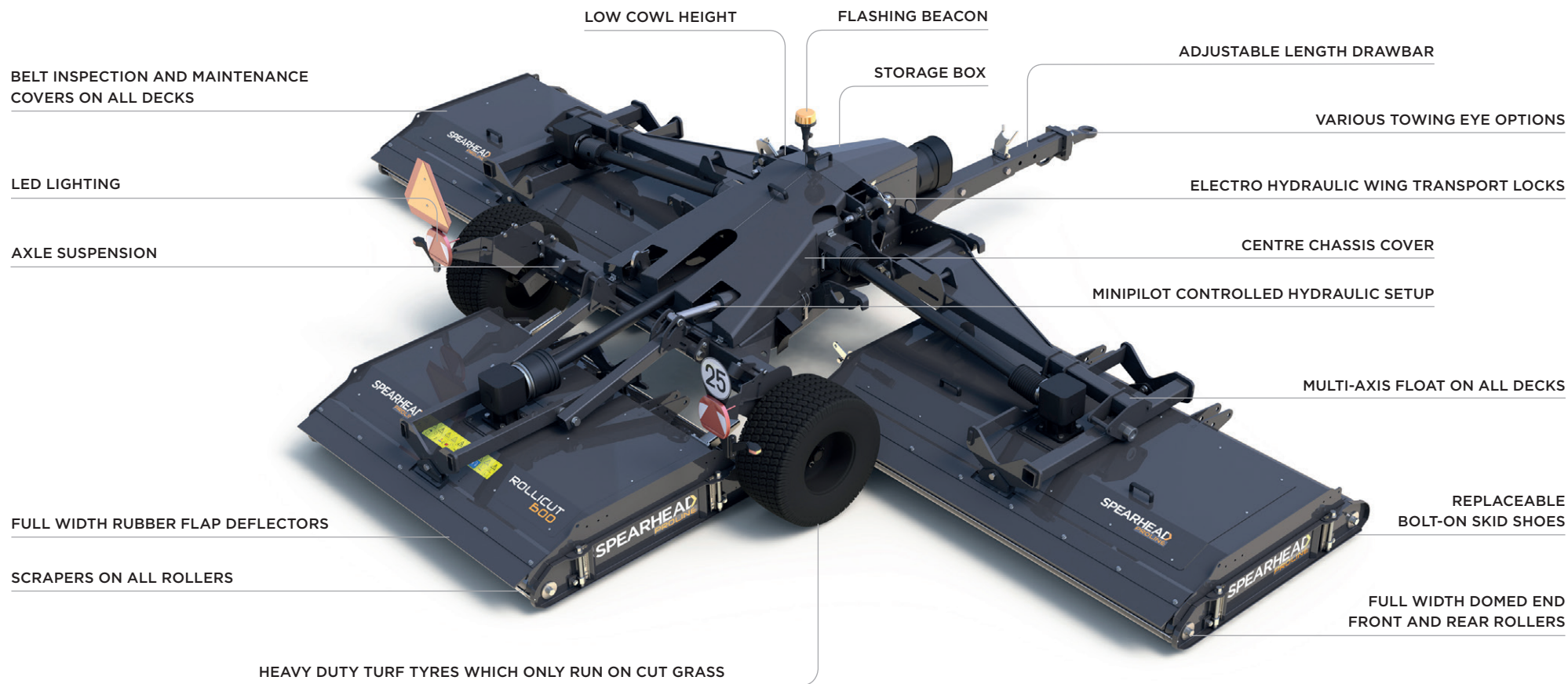


SPEARHEAD

ROLLICUT 500/600 PROLINE



ROLLICUT 500/600 PROLINE FEATURES



**ROLLICUT
500 PROLINE**

**ROLLICUT
600 PROLINE**

UNIT OPTIONS



TRACTOR HP

60hp (45kW)

70hp (53kW)



ROAD TYRES



PTO SPEED

540rpm

540rpm



SWIVEL TOWING EYE



TRANSPORT WIDTH

2.66m (8' 9")

2.66m (8' 9")



K80 TOWING HITCH



3-POINT LINKAGE MOUNTING



MUDGUARD KIT



CUTTING WIDTH

4.85m (15' 11")

5.99m (19' 8")



BLADE TYPE

Fine cut, high lift

Fine cut, high lift



NUMBER OF BLADES

27

33

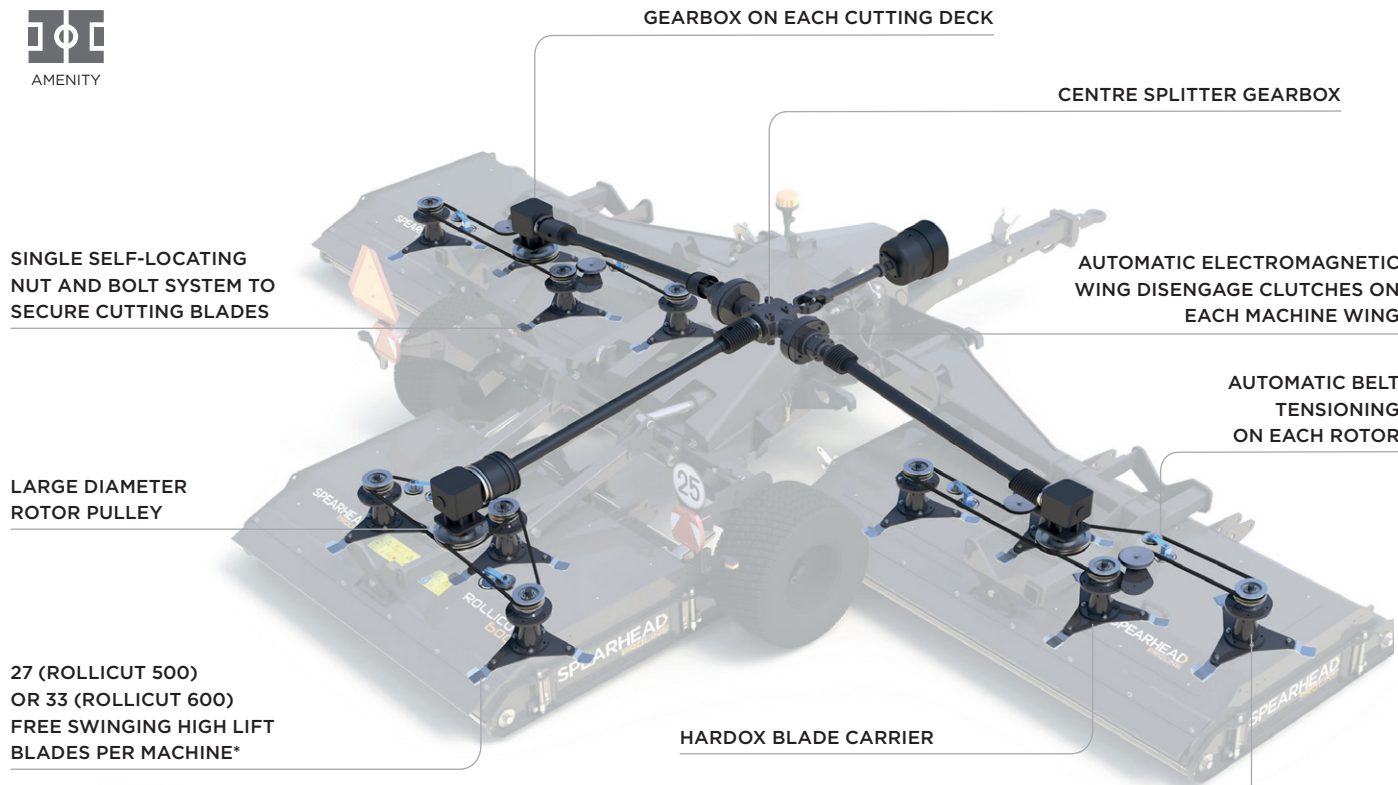


CUTTING HEIGHT

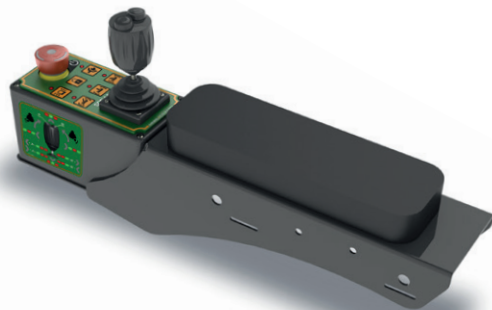
0mm - 110mm
(0" - 4.3")

0mm - 110mm
(0" - 4.3")

ROLLICUT 500/600 PROLINE PROFESSIONAL LEVEL AMENITY MOWING



27 (ROLLICUT 500)
OR 33 (ROLLICUT 600)
FREE SWINGING HIGH LIFT
BLADES PER MACHINE*



INNOVATIVE MINIPILOT ELECTRIC CONTROL SYSTEM
TO CONTROL ALL ASPECTS OF THE MACHINE

* Rollicut 600 machine shown
Rollicut 500 machines feature three cutting rotors on all decks
Rollicut 600 machines feature four cutting rotors on wing decks
and three cutting rotors on the rear deck

With more features fitted as standard, the Spearhead Rollicut Proline is a professional machine designed for high output amenity operators covering parkland, golf course, orchard and topping applications.

The Rollicut Proline features multi-axis deck articulation to ensure a level cut and reduced scalping in its either 5.0 or 6.0 metre cutting widths options. Each cutting rotor is powered by a centre mounted gearbox found on each deck, connected via a belt drive transmission with automatic tensioners to ensure reliable power to each of its lifting blades.

Reduced stoppages, maintenance and increased user comfort are the key benefits brought with this higher specification Proline model with Spearhead's Minipilot control system being the focal point of managing these additional features.

Electric wing clutches with position sensors allow the operator to independently and automatically stop and restart each of the rotors when the particular deck is required to be raised to clear obstacles. Electric wing locks safely secure and release the machine wings for transport without the operator needing to leave the comfort of the cab.

Finally added features such as flashing beacons and roller cleaning scraper wires on add together to create a machine which improves carrying out daily operations and the overall final finish of the working carried out.

STANDARD SPECIFICATION	ROLLICUT 500 PROLINE	ROLLICUT 600 PROLINE
Machine weight	TBC	3160kg (6967lbs)
Hitch	Multi-positional drawbar with towing eye wear pad	Multi-positional drawbar with towing eye wear pad
Hitch position	Rear mount only	Rear mount only
Cutting width	4.85m (15' 11")	5.99m (19' 8")
Working width	4.97m (16' 4")	6.12m (20' 1")
Overall length	4.76m (15' 8")	4.76m (15' 8")
Cowl height	490mm (1' 8")	490mm (1' 8")
Transport width	2.66m (8' 9")	2.66m (8' 9")
Transport height	2.57m (8' 6")	3.13m (10' 4")
Cutting height	0mm – 110mm (0" – 4.3")	0mm – 110mm (0" – 4.3")
Cutting capacity	80mm (3.1")	80mm (3.1")
Wing working angles	45° up/15° down	45° up/15° down
Recommended tractor HP	60hp (45kW)	70hp (53kW)
Power take-off speed	540rpm	540rpm
Gearbox	Cast iron housing	Cast iron housing
Input shaft	1-3/8" Z6 and 35mm output shaft	1-3/8" Z6 and 35mm output shaft
Gearbox lubricant	EP80-90W or GL-4 / GL-5 oil	EP80-90W or GL-4 / GL-5 oil
Gearbox oil capacity [splitter]	TBC	TBC
Gearbox oil capacity [deck (x3)]	1.3 litres (2.3 pints)	1.3 litres (2.3 pints)
Cowl construction	All welded construction	All welded construction
Skid construction	Replaceable bolt-on skid	Replaceable bolt-on skid
Blades	Fine cut, high lift	Fine cut, high lift
Blade quantity	27	33
Blade tip speed	87m/s (17126 fpm)	87m/s (17126 fpm)
Roller diameter (front + rear)	168mm (6.5")	168mm (6.5")
Tyres	26 x 12 turf tyres	26 x 12 turf tyres

* With front and rear single chain guards ** Underside of deck to skid

SPEARHEAD

📍 Station Road, Salford Priors, Evesham, Worcestershire, WR11 8SW, England ☎ +44 (0)1789 491860

✉ enquiries@spearheadmachinery.com 🌐 spearheadmachinery.com 📱 SpearheadWorld



designed and built in
GREAT BRITAIN

Spearhead
is a member of the
Alamo Group